

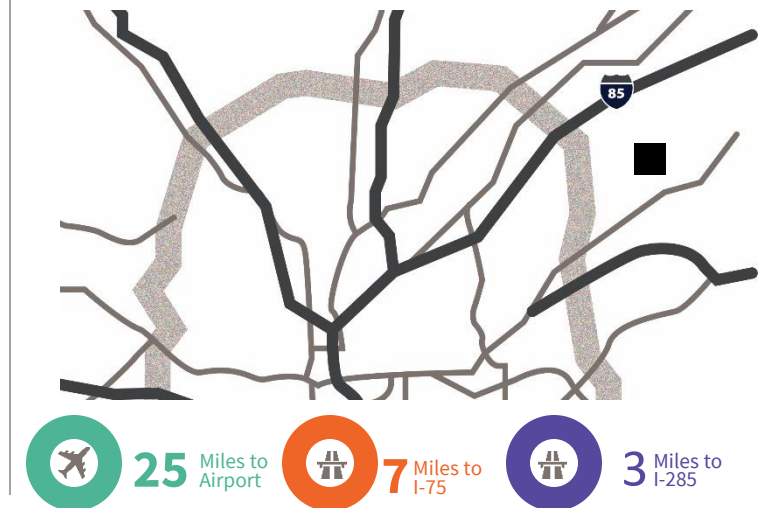


2040 Steel Drive, Suite I, Tucker, GA

Opportunity

- 7,505 sf available
- 1,157 sf office space
- 57,457 total building size
- 20' clear height
- 28' x 26' bay size
- Doors – 1 (10'x10') DH , 1 (10'x10') DI

Location



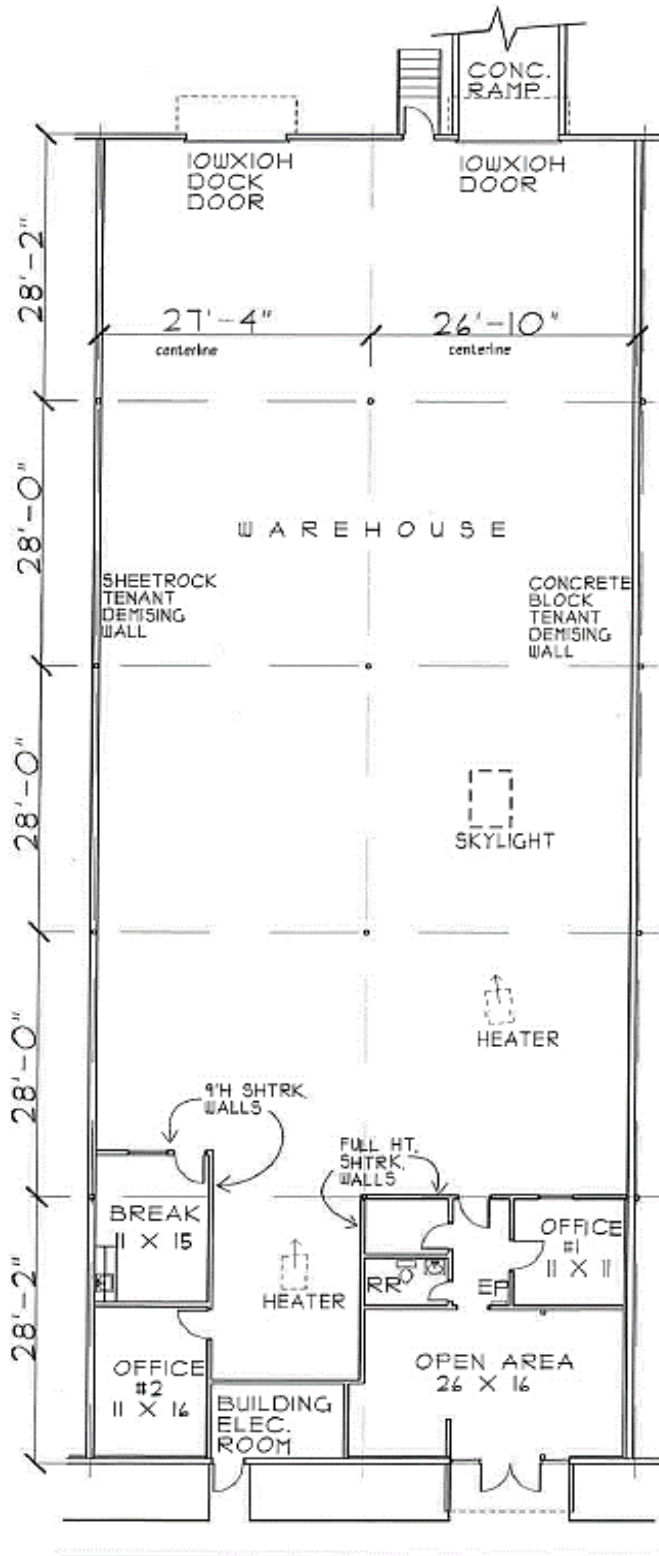
**For further
information**

Ben Parker, SIOR
Senior Vice President
+1 404 409 5678

avisonyoung.com

Industrial For Lease

Steel Drive / 2040 Steel Drive, Suite I, Tucker, GA



For further information



Ben Parker, SIOR
Senior Vice President
+1 404 409 5678
ben.parker@avisonyoung.com

Owned by:

